

**RWHC  
COMMUNITY  
ECONOMIC  
DEVELOPMENT**





**WHAT'S  
NEXT?**



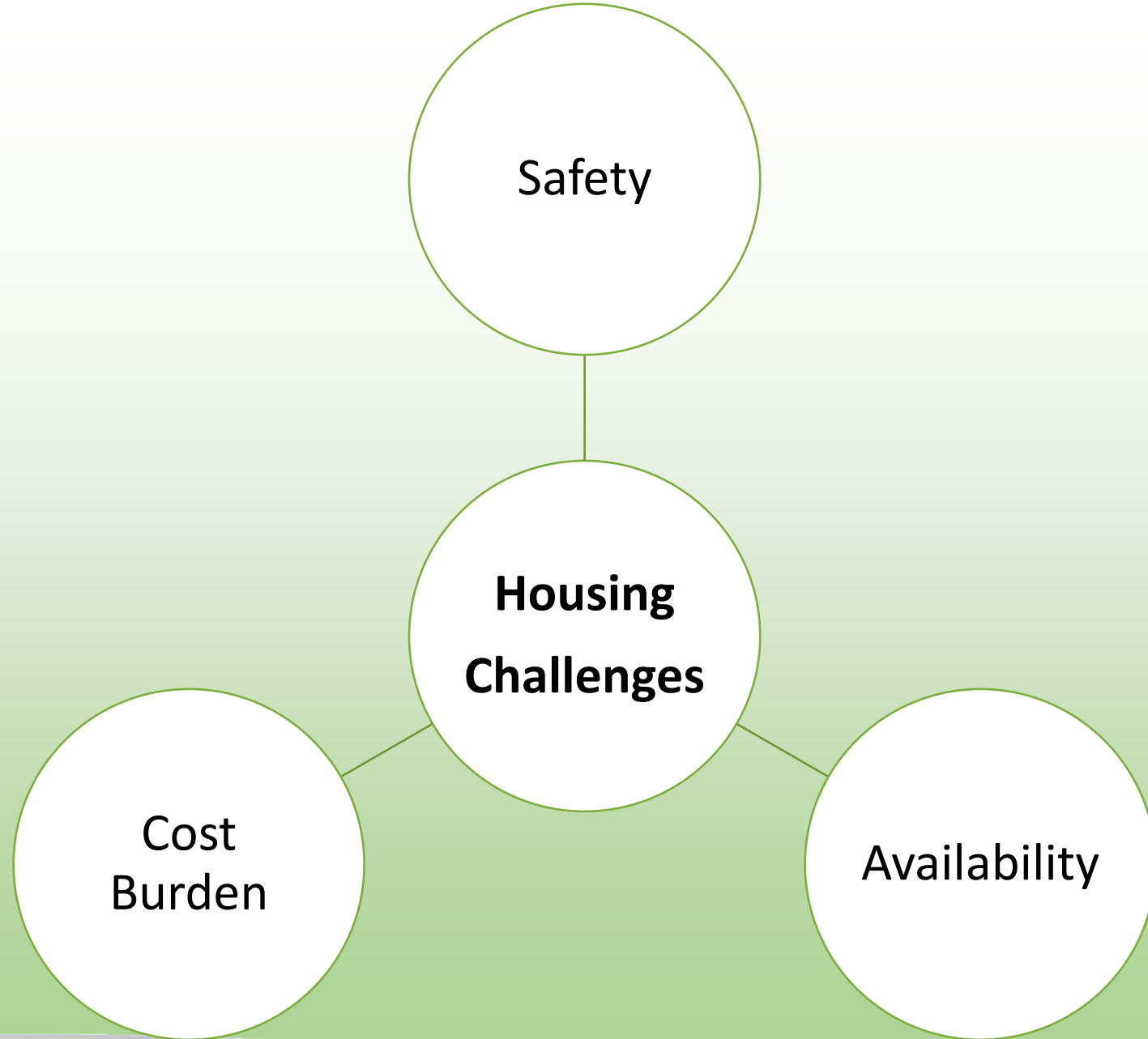
# What's Next?

1. Diagnose Your Challenge
2. Gather Your Allies
3. Identify Your Assets
4. Start With Small Wins + Build Momentum
5. Persist!

# Step 1: Diagnose Your Challenge

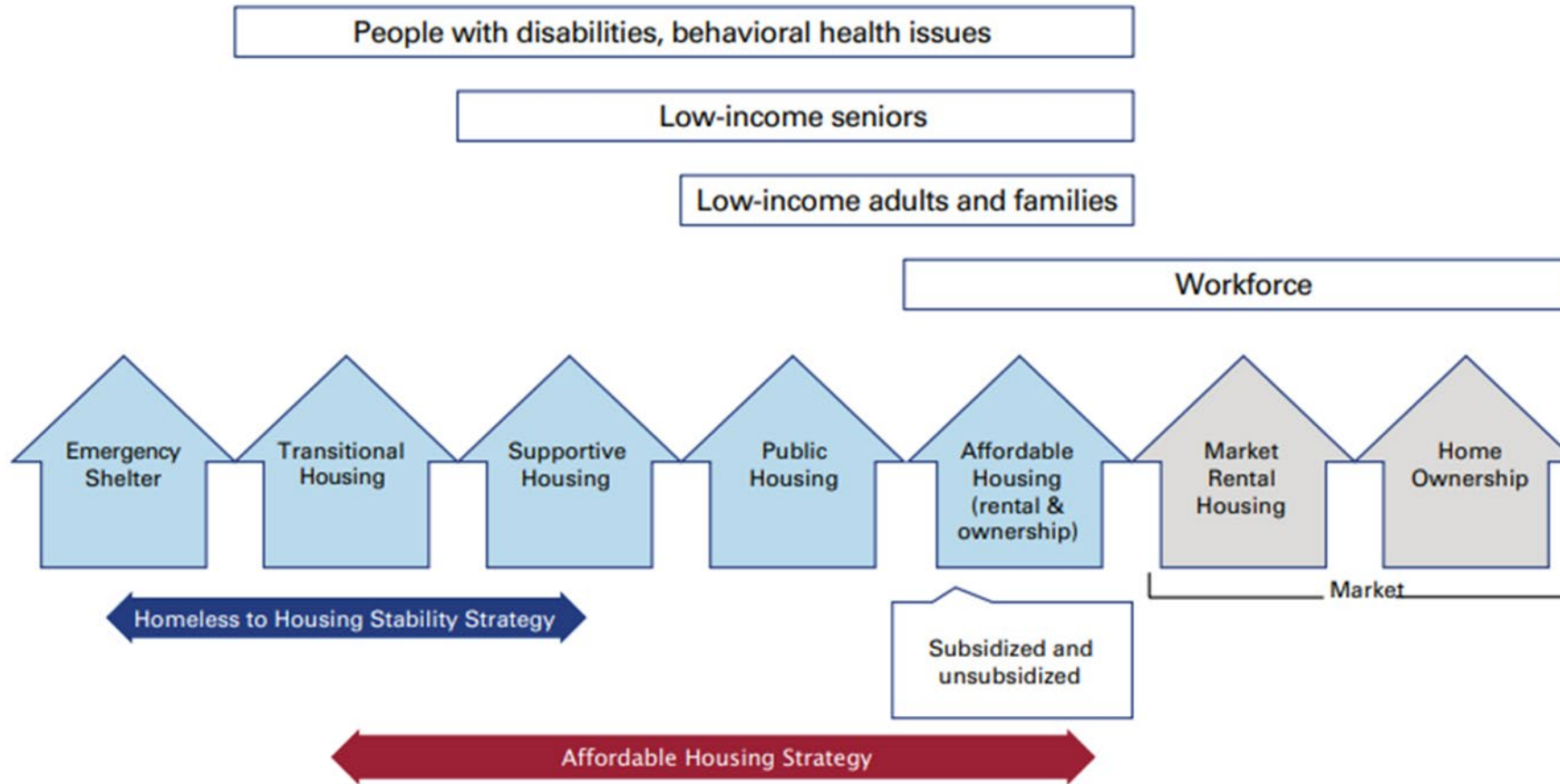


# DIAGNOSE

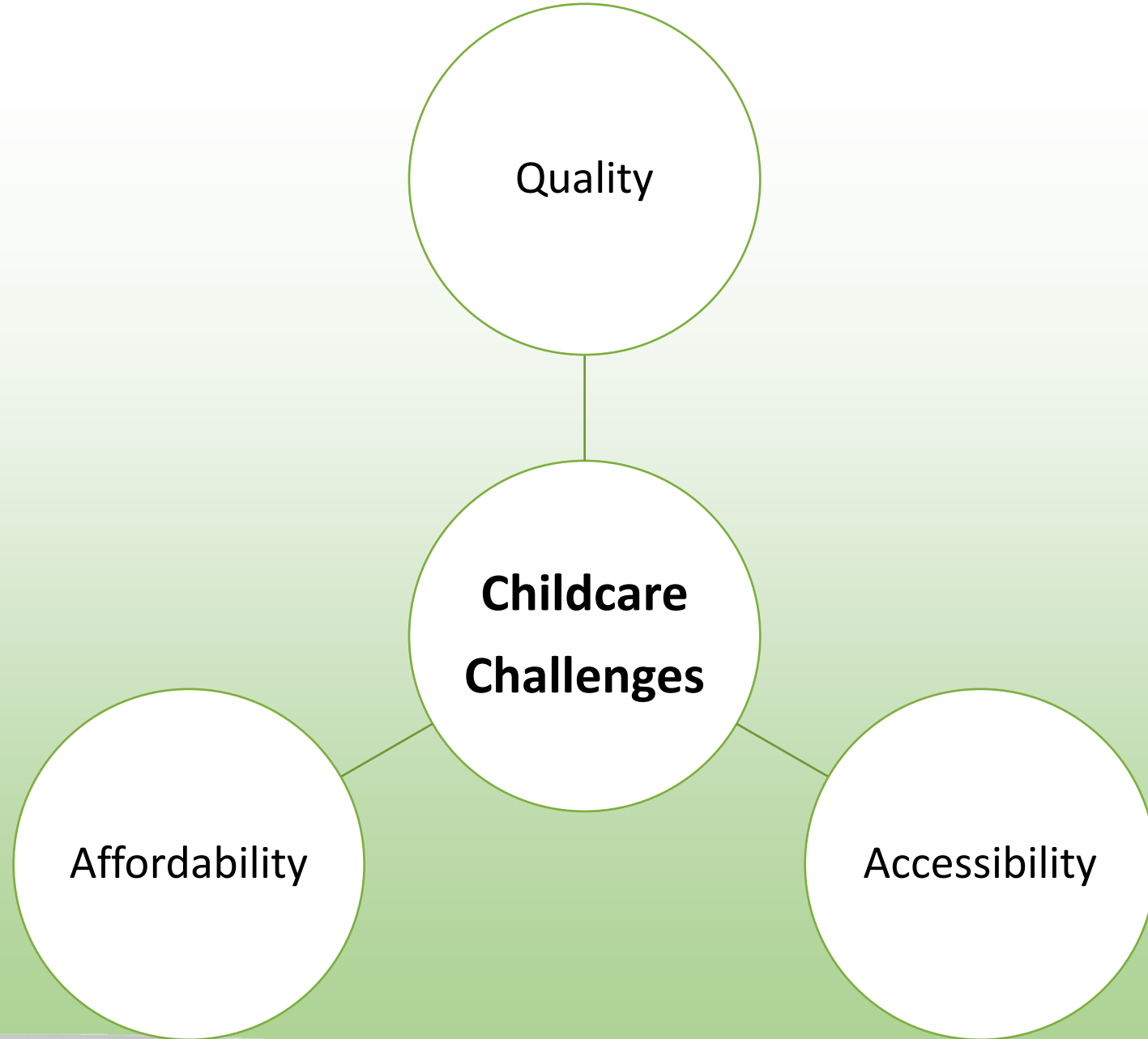


# FIGURE 1: Range of Housing Types

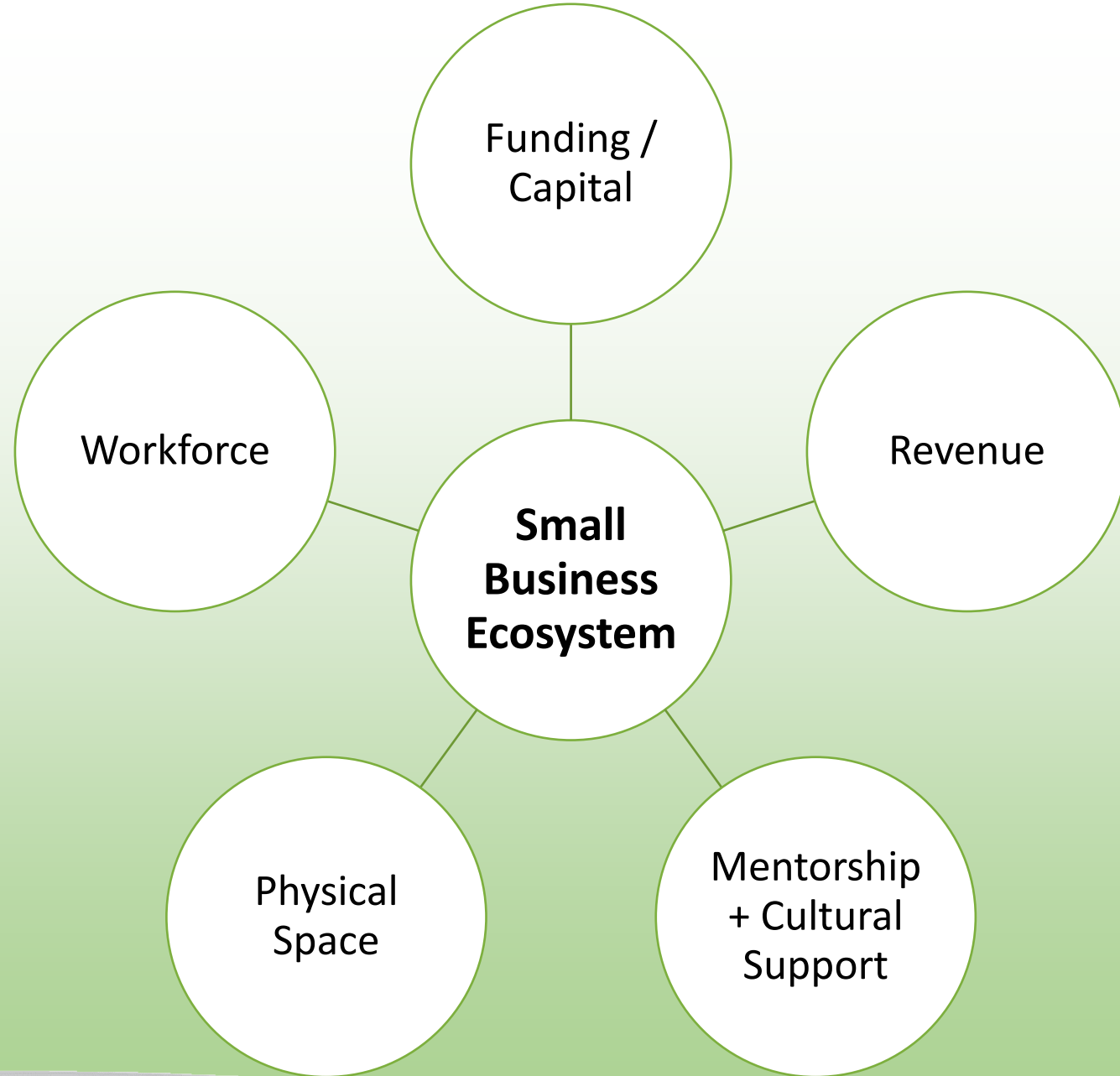
Target Populations:



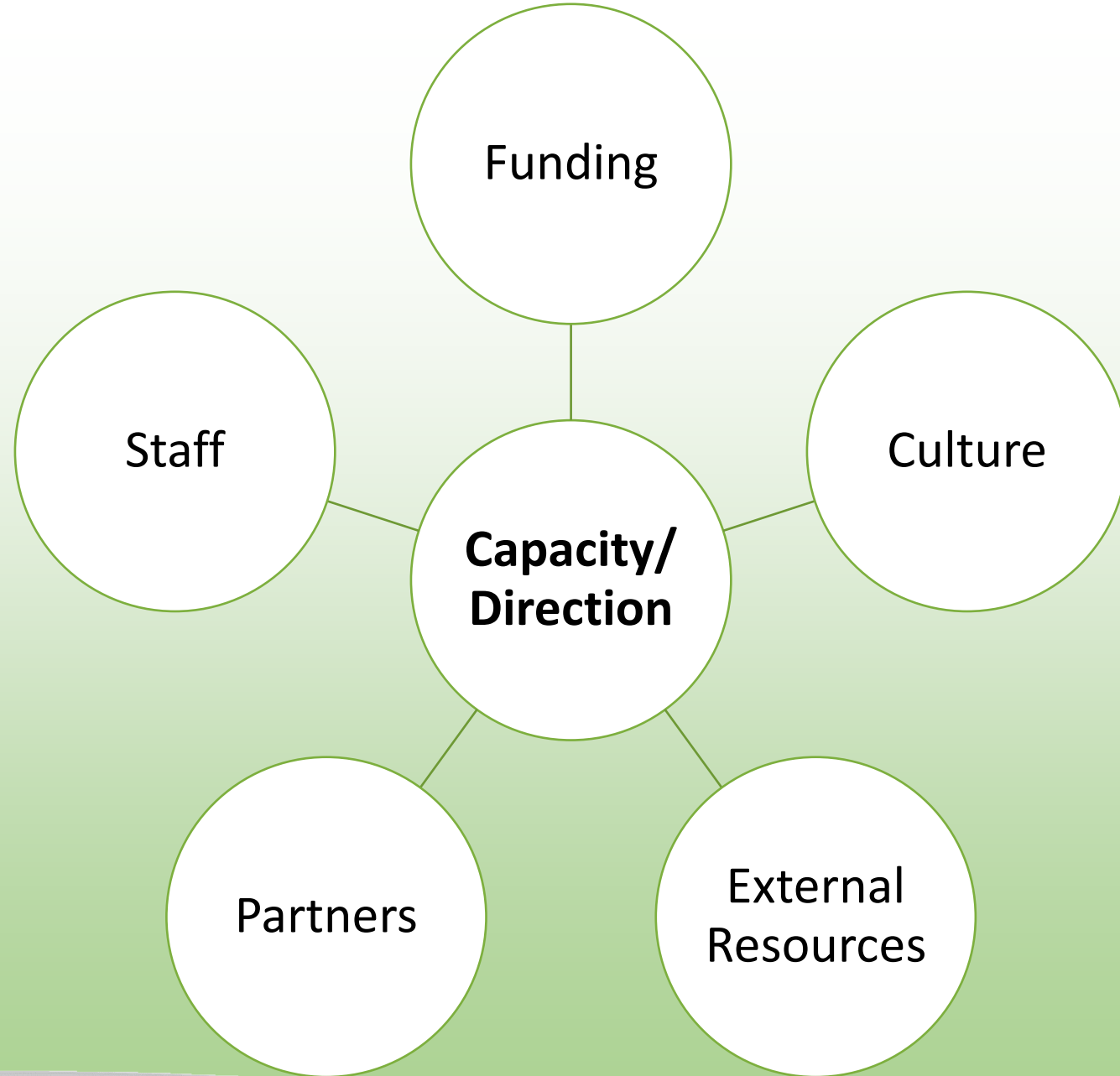
Source: Center for Community Investment, 2019. Adapted from Housing continuum by SixEightFour, 2009. <http://sixeightfour.blogspot.com/2009/03/housing-continuum.html?m=1>











## Step 2: Gather Your Allies



*“People act in  
their own self  
interest”*

# Foundations of Partnership

- Trust
- Transparency
- Commitment

If you want to go fast,  
**GO ALONE.**

If you want to go far,  
**GO TOGETHER.**

AFRICAN PROVERB

# Step 3: Identify Your Assets

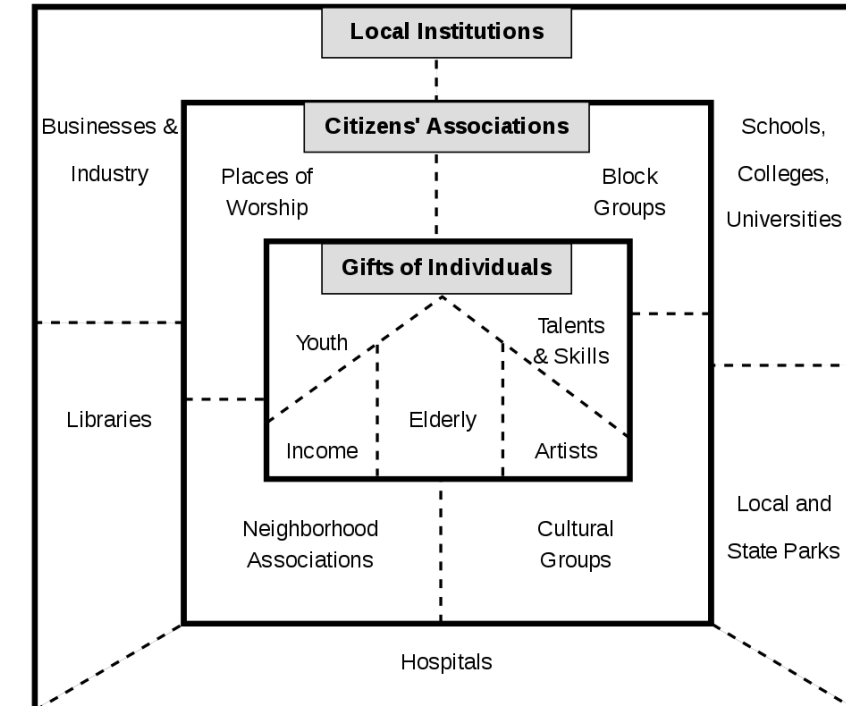
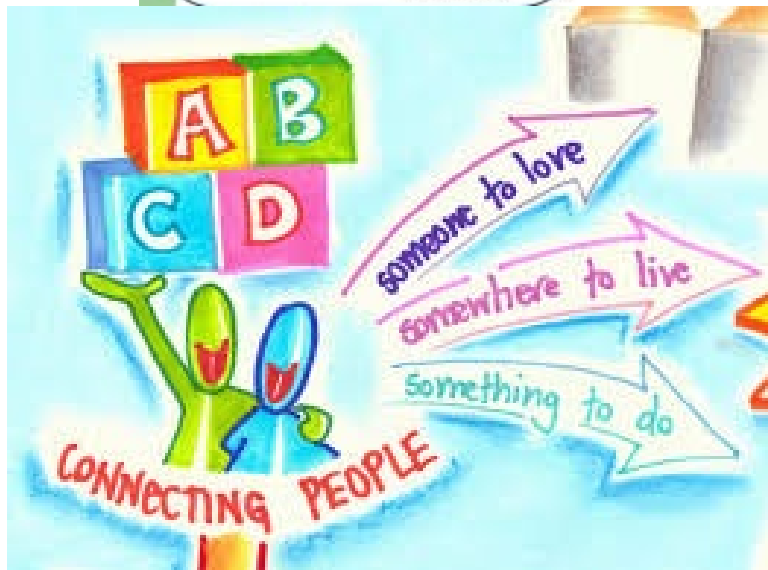
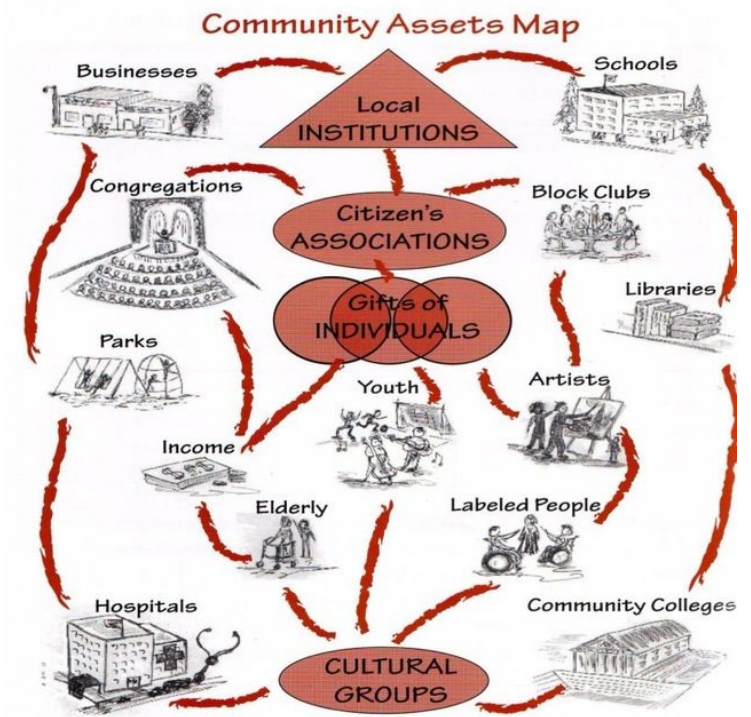
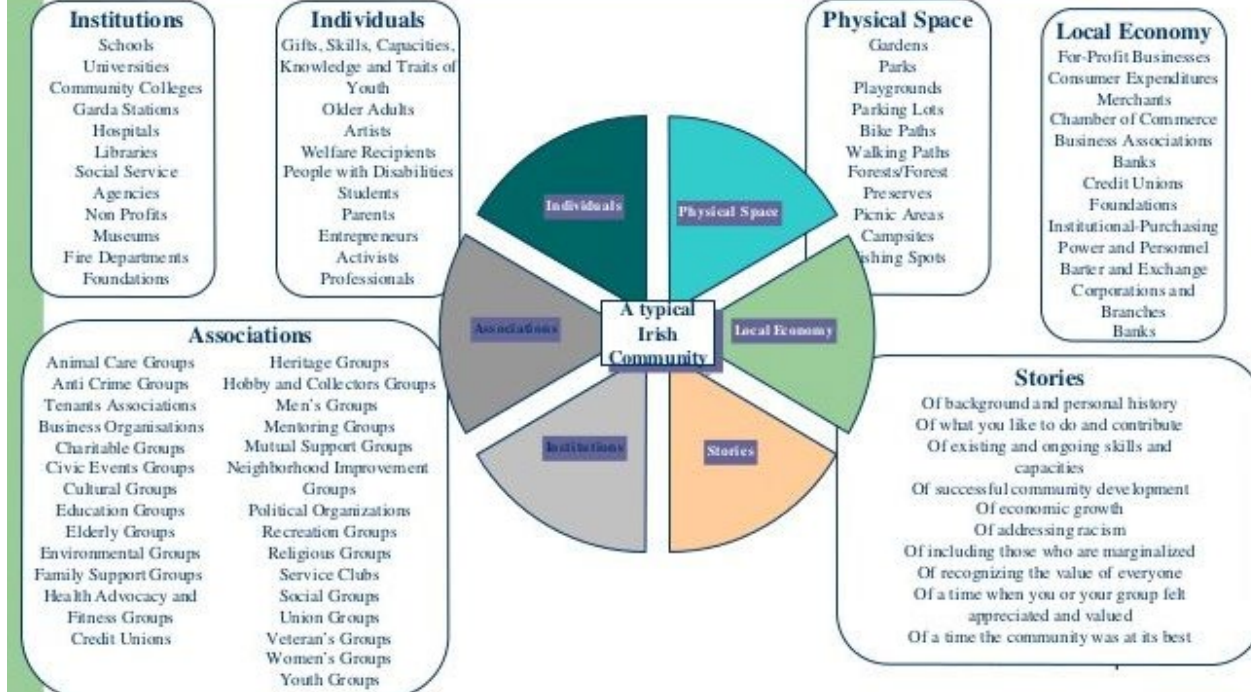
- Today
  - Examples from Other Communities
  - Networking Follow Ups
  - State Resources
  - Regional Resources
- At Home
  - People
  - Places
  - What's Unique?
  - What's Personal?



Source: National Center for Farmworker Health



# A Sample Community Asset Map



EMPTY  
GLASS:

Communities  
are full of  
people with  
different  
needs and  
deficiencies.



FULL  
GLASS:

Communities  
are full of  
people with  
ideas, skills,  
and  
capacities.

Where you **look** drives what you **see**.



# Step 4: Start with Small Wins + Build Momentum

- Control the Controllables
- What can you do for \$0?
- What can you do with the resources you have NOW?
- What can you do to build buy-in?



# Step 5: Persistence!



# When you get stuck...

- Go Outside! Move Your Body!
- Engage the Detractors
- Reconnect with “Why”
- Try Again
- Assume Good Intent
- Ask for Help
- Learn from Others
- Take Ownership of Error

# What's Next?

1. Diagnose Your Challenge
2. Gather Your Allies
3. Identify Your Assets
4. Start With Small Wins + Build Momentum
5. Persist!

|   |  |   |
|---|--|---|
| <u>What is your challenge?</u>                                | <u>Who are your allies?</u>                        | <u>What are 3 assets you can utilize?</u> |
| <u>What are 3 easy first steps that can move you forward?</u> | <u>What can you do when you hit a rough patch?</u> | <u>Key Takeaways/Notes</u>                |

# Contact Information

Marie Barry

Director of Community Economic Development

Rural Wisconsin Health Cooperative

[mbarry@RWHC.com](mailto:mbarry@RWHC.com)