



heart.org/getwiththeguidelines



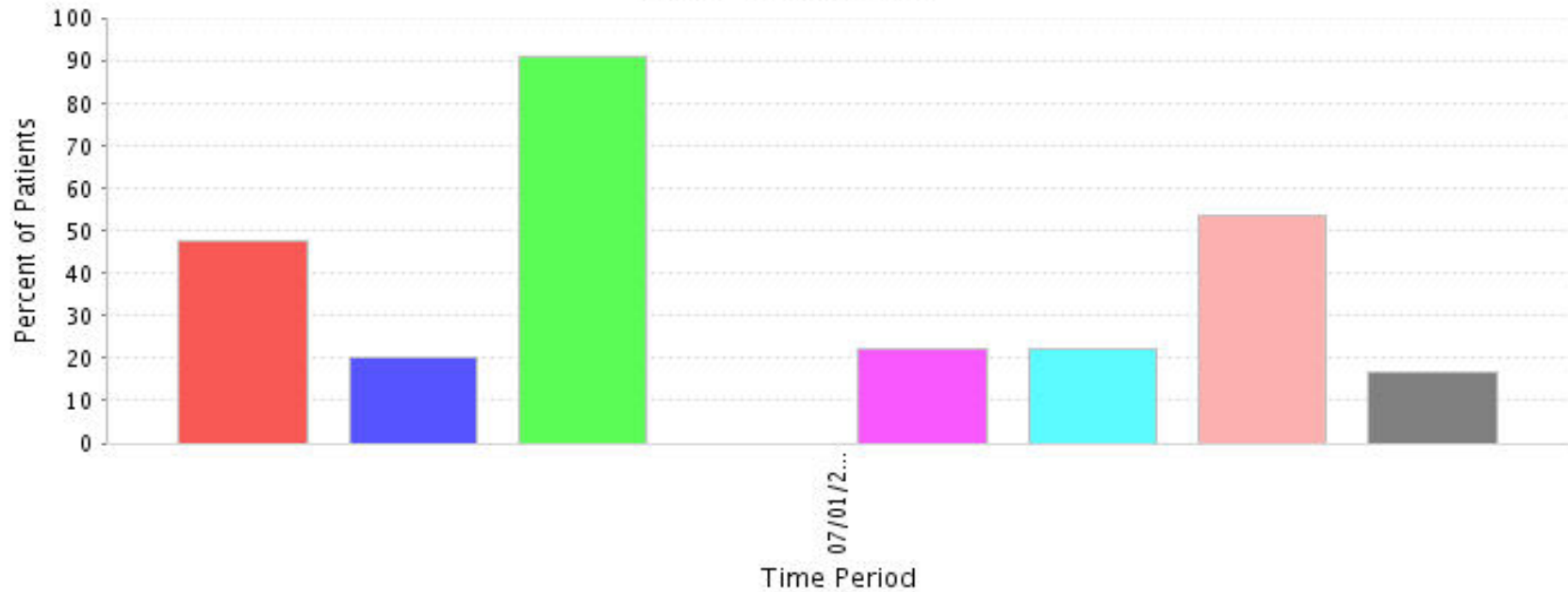
Get With The Guidelines vs. Target Stroke

- Get With The Guidelines is a longitudinal, voluntary web based registry providing clinical decision support at the point of care and/or retrospective performance improvement. Nationally includes more than 1 million stroke patient records with more than 1600 hospitals participating. Provides hospital, regional, state & national benchmarking capabilities. Hospitals are recognized locally & nationally for sustaining high quality stroke care.
- Target Stroke is an initiative focused on improving DTN times. The initiative focuses on hospital processes that directly impact eligible stroke patients receiving tPA. The program is offered to Get With The Guidelines and non-Get With The Guidelines hospitals. Hospitals are recognized for sustaining high quality.

ICAHN & Get With The Guidelines –Stroke Update

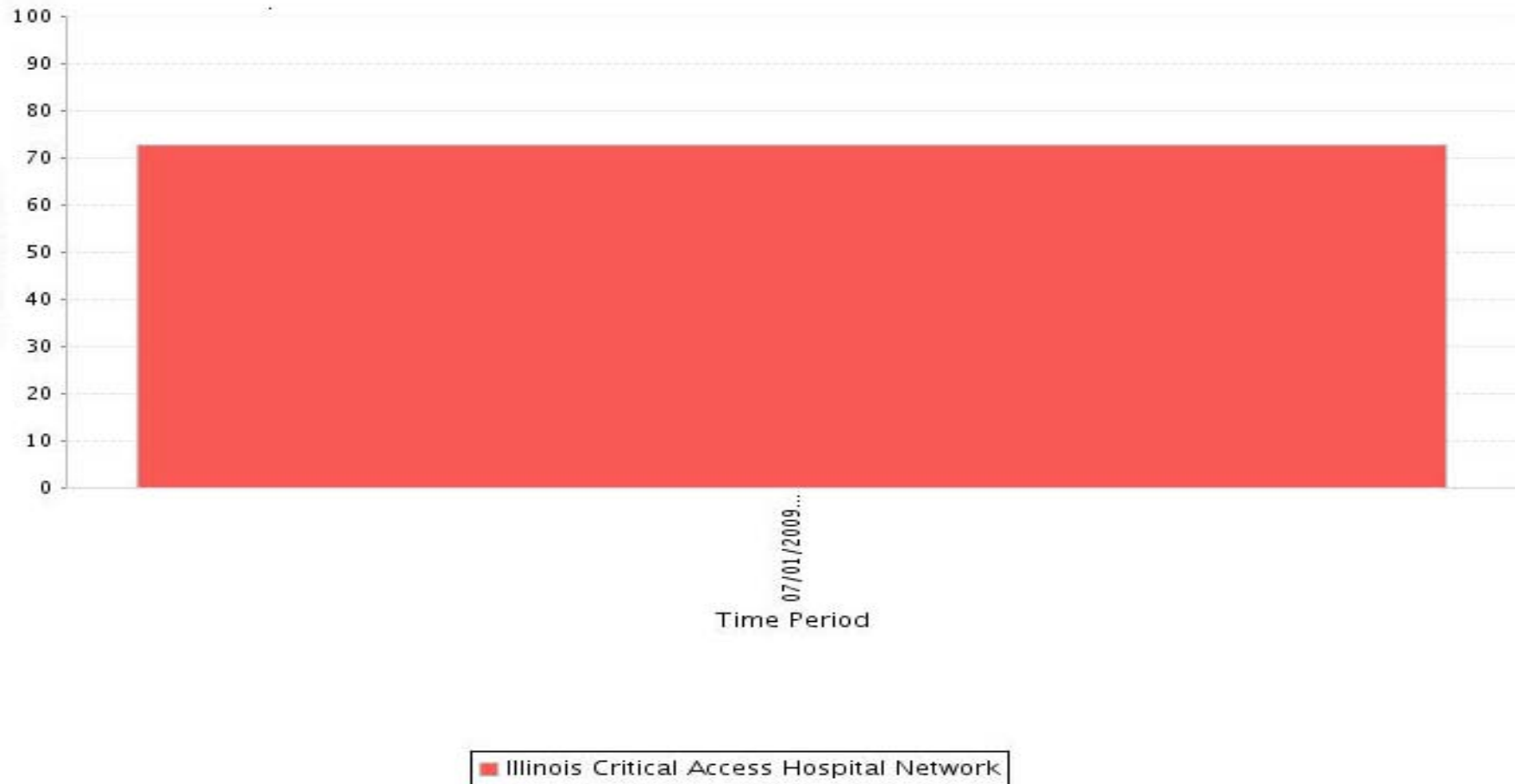
- ❖ 15 ICAHN Critical Access Hospitals funded for Get With The Guidelines web-based patient management tool.
- ❖ Year 1 focus on implementation, education, establishment of baseline and acute stroke care performance improvement (PI)
- ❖ Year two= identify funding or use hospital SHIP funds for PI. Acute measure focus for ESRH preparation, EMS pre-notification, tPA for eligible patients.
- ❖ Provides simple solution for ESRH stroke patient log
- ❖ ICAHN benchmark – Aggregate data used for planning, education & funding

Rate Measures



- Dysphagia Screen*: Illinois Critical Access Hospital Network
- Stroke Education*: Illinois Critical Access Hospital Network
- Rehabilitation Considered*: Illinois Critical Access Hospital Network
- Door To IV rt-PA in 60 Min: Illinois Critical Access Hospital Network
- LDL Documented: Illinois Critical Access Hospital Network
- Intensive Statin Therapy: Illinois Critical Access Hospital Network
- LDL 100 or ND*: Illinois Critical Access Hospital Network
- IV rt-PA Arrive by 3.5 Hour, Treat by 4.5 Hour: Illinois Critical Access Hospital Network

EMS Pre-notification of Suspected Stroke



Get With The Guidelines Implementation Timeline

- Sign contract with AHA technology vendor: Outcome Science, Inc. \$720/annual participation fee
- Identify hospital's stroke physician champion
- Review stroke standing orders & protocols are in compliance with AHA/ASA recommended treatment guidelines for the treatment of acute stroke patients.
- One-on-one user training. Access to web-based Patient Management Tool, username & password provided. Reports training should be scheduled for ~ 3 months.
- CAH's hospitals enter 30 stroke & TIA records or equivalent of one year's stroke/TIA patient volume (whichever is less) to establish baseline.
- Complete "Participating" hospital checklist and submit to AHA QI Dir.
- AHA recognition for "Participating" award status. PR template & certificate provided

Congratulations to ICAHN's Get With The Guidelines Participating Hospitals To Date.....

- Kirby
- Thomas Boyd
- Advocate Eureka
- Dr. John Warner
- Sparta
- Pana
- Ferrell
- OSF Holy Family- Participating level since 2007!

Benefits of Get With The Guidelines Participation

- QI for treatment of acute stroke patients
- Position hospital for ESRH designation
- Simple ESRH stroke patient log solution using reporting capabilities
- Access to AHA continuing education programs, webinars, etc.
- Get With The Guidelines hospitals have shown positive impact on bottom line (LOS, readmissions)
- Recognition from the American Heart Association
- Impact health of community & increase awareness of stroke signs & symptoms.
- Strengthen hospital-EMS relationship with pre-notification and feedback to providers
- Data supports ICAHN's future funding opportunities for to enhance stroke initiatives (telestroke, professional education, community awareness programs, etc.)

For more information.....

Kathleen O'Neill, MHA

Sr. Dir. Quality Initiatives

American Heart Association

312-476-6622

Kathleen.oneill@heart.org

www.heart.org/getwiththeguidelines